

CCTV systems for all vehicles



Company Profile

Passionate...



...about safety



All our products, from beacons and lightbars to reverse cameras and warning alarms are designed to maximise vehicle safety and reduce accidents all around the world.

As part of the ECCO Group we have a global presence and supply our safety products to more than 45 countries from our production facilities in the UK, USA and Australia.

...about service



As a Vision Alert customer, you are of the utmost importance to us. Our Customer Service team is always on hand to offer expert sales and technical support, ensuring that we get the right product to you at the right time.

Choosing the right product for the right application is vital. As specialists in warning and safety products we can offer expert advice on a comprehensive range of effective visibility solutions to really get you noticed.

...about quality



We are committed to delivering the highest quality products to you.

All our products have to pass rigorous endurance, water spray, dust, dirt and vibration tests.

...about design and innovation



You can be sure that specifying Vision Alert means choosing the very latest technology.

Our in-house Design Engineers work in partnership with our customers to best understand their needs and produce practical, innovative warning solutions to safety on and off road.

Safety

“Nearly a quarter of all deaths involving vehicles at work both on and off road occur during reversing. Many more reversing accidents do not result in injury but cause costly damage to vehicles, equipment and premises.”

Health and Safety Executive

...Can you afford not to?

Safe with Vision Alert

Our comprehensive range of reversing safety systems is designed to prevent costly accidents, eliminate workplace injury and help to save lives.



A solution for every vehicle

Flexible camera and monitor combinations allow you to create the perfect system for your vehicle. With over 30 recommended kits, there is bound to be a solution for your vehicle or fleet. Our compact monitors and minicams are ideal for light commercial vehicles, whilst a new range of mirror and shutter cameras provide the all round coverage needed for artics and drawbar units.

Premium quality and innovation

The Vision Alert CCTV range is packed full of premium features and utilises the latest technology available. All products within the range are manufactured to the highest quality standards and our colour cameras feature Sony CCD technology. Shutter cameras are fitted with sensors and in the event of the shutter becoming frozen, an auto shut-off prevents shutter motor failure.

Professional advice

Whatever your safety requirements Vision Alert will be able to help you find the right system for your vehicle, maximising visibility and enhancing safety on and off road. Why not ask about our range of Reverse Alarms to provide even more reversing safety?



Contents

New technology applications	4
Vehicle applications	5
Compact colour systems	6
5" black & white systems	7
5.6" colour standard systems	8 & 9
7" colour widescreen systems	10 & 11
Technical specifications: monitors	12
Technical specifications: cameras	13
Technical specifications: accessories	14
Technical specifications: DVRs	15

New technology applications

The very latest in CCTV technology



141-003

3.5" monitor with built-in controller
*LCV applications such as delivery vans.



141-004

4.2" monitor with built-in controller
*LCV applications such as delivery vans.



142-005

Adjustable eyeball camera
*Perfect for interior and exterior use where camera angle adjustment is needed.



142-007

Minicam flush mount
*Ideal for interior and exterior applications where other cameras may be damaged. Available in chrome, silver or black finish.



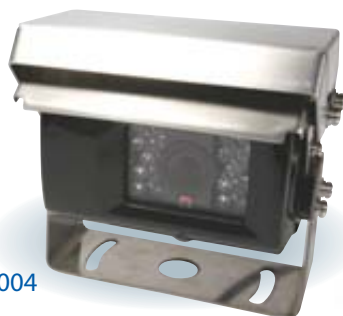
142-006

Minicam surface mount
*Smaller vehicle applications where the standard camera is simply too bulky to mount.



142-008

Mirror camera
*A valuable addition to any large vehicle or vehicle which is required to reverse frequently in restricted or dangerous areas.



142-004

Shutter camera
*Heavy duty applications where lens protection is needed when not in use, such as mining, quarrying and refuse sites. In the event of the shutter becoming frozen, the auto shut-off mode prevents shutter motor failure.



142-009

Black and white camera
*High specification accessory black and white camera. For use in frequent low light conditions.

Product applications

Which is the best system for your vehicle?

SMALL DELIVERY VAN



* 3.5" unit

With minicam flush or surface mount.

MEDIUM SIZED VAN



* 4.2" unit

With minicam surface mount, eyeball camera or standard colour camera.

6 WHEEL TIPPER



* 5" or 5.6" options

CRT monitor for cost conscious b&w features or consider Quad controller with the colour TFT units to allow 2 x mirror and a single rear standard or shutter camera.

ARTIC UNIT



* 5" or 5.6" options

CRT monitor for cost conscious b&w features or consider Quad controller with the colour TFT units to allow 2 x mirror and a single rear standard or shutter camera.

DRAWBAR UNIT



* 5" or 5.6" options

CRT monitor for cost conscious b&w features or consider Quad controller with the colour TFT units to allow 2 x mirror and a single rear standard or shutter camera.

BUS & COACH



* 7" unit

Consider QUAD controller to allow 2 x mirror, 1 x interior flush minicam and 1 x rear standard camera. DVR 4 channel for simultaneous recording and storage.

SECURITY VEHICLES, HORSE BOXES



* 3.5 or 4.2" unit

With eyeball camera mounted inside and standard colour camera at rear.

REFUSE VEHICLES



* 5" or 5.6" options

Consider Quad controller with the TFT units to allow 2 x mirror and a single rear standard or shutter camera.



Compact colour systems

Perfect for light commercial vehicles where space is limited

3.5" up to 2 camera capable kits

Kit No: 140-320



Monitor, minicam, cable

Kit No: 140-321



Monitor, standard camera, cable

Kit No: 140-323



Monitor, eyeball camera, cable

4.2" up to 2 camera capable kits

Kit No: 140-420



Monitor, minicam, cable

Kit No: 140-421



Monitor, standard camera, cable

Kit No: 140-423



Monitor, eyeball camera, cable

Add-ons, alternative kit options

142-003
Additional standard camera

142-005
Additional eyeball camera

142-006
Additional minicam surface mount

142-007
Additional minicam flush fit

145-000
DVR unit single camera feed

145-001
DVR unit up to 4 camera feed

143-000
Additional cable 5m

143-003
Additional cable 10m

143-002
Additional cable 15m

143-004
Additional cable 20m

143-005
Additional cable 30m

143-006
Additional cable susie unit

Note that shutter camera is not available on 3.5" and 4.2" systems.

5" black & white systems

Traditional style where cost and simplicity are the key

5" CRT kits

Kit No: 140-000



Monitor, black & white camera, cable

Kit No: 140-004



Monitor, 2 black & white cameras, 2 cables

5" TFT kits

Kit No: 140-003



Monitor, black & white camera, control box, cable

Kit No: 140-007



Monitor, 2 black & white cameras, control box, 2 cables

Add-ons, alternative kit options

142-002
Additional camera b&w

145-000
DVR unit single camera feed

143-000
Additional cable 5m

143-003
Additional cable 10m

143-002
Additional cable 15m

143-004
Additional cable 20m

143-005
Additional cable 30m

143-006
Additional cable susie unit

Note that shutter camera is not available on black and white systems.



5.6" colour standard systems

Our most popular size for compact clarity

Single camera kits

Kit No: 140-510



Monitor, in-line controller, standard camera, cable

Kit No: 140-511



Monitor, in-line controller, shutter camera, cable

Up to 2 camera capable kits*

Kit No: 140-520



Monitor with built-in controller, standard camera, cable

Kit No: 140-522



Monitor with built-in controller, 2 mirror cameras, 2 cables

Kit No: 140-523



Monitor with built-in controller, cable for single camera (camera not included)

* Note that separate 2 camera controller (144-004) available for use with shutter camera.

5.6" colour standard systems

Up to 4 camera capable kits

Kit No: 140-530



Monitor with external 4-way controller, standard camera, camera switch panel, cable

Kit No: 140-534



Monitor with external 4-way controller, 2 mirror cameras, camera switch panel, 2 cables

Kit No: 140-532



Monitor with external 4-way controller, 2 standard cameras, camera switch panel, 2 cables

Kit No: 140-535



Monitor with external 4-way controller, camera switch panel, cable for single camera (camera not included)

Add-ons, alternative kit options

142-003 Additional standard camera	145-001 DVR unit up to 4 camera feed
142-004 Additional shutter camera	143-000 Additional cable 5m
142-005 Additional eyeball camera	143-003 Additional cable 10m
142-006 Additional minicam surface mount	143-002 Additional cable 15m
142-007 Additional minicam flush fit	143-004 Additional cable 20m
142-008 Additional mirror camera	143-005 Additional cable 30m
145-000 DVR unit single camera feed	143-006 Additional cable susie unit

* Note that shutter camera not available on controller 144-005. Use Quad controller 144-006 and cable 143-010.



7" colour widescreen systems

For regular multi camera use and greater detail

Single camera kits

Kit No: 140-710



Monitor, in-line controller, standard camera, cable

Kit No: 140-711



Monitor, in-line controller, shutter camera, cable

Up to 2 camera capable kits*

Kit No: 140-730



Monitor with built-in controller, standard camera, cable

Kit No: 140-732



Monitor with built-in controller, 2 mirror cameras, 2 cables

Kit No: 140-733



Monitor with built-in controller, cable for single camera (camera not included)

* Note that separate 2 camera controller (144-004) available for use with shutter camera.

7" colour widescreen systems

Up to 4 camera capable kits

Kit No: 140-734



Monitor with external 4-way controller, standard camera, camera switch panel, cable

Kit No: 140-735



Monitor with external 4-way controller, 2 mirror cameras, standard camera, camera switch panel, 3 cables

Add-ons, alternative kit options

142-003 Additional standard camera	145-001 DVR unit up to 4 camera feed
142-004 Additional shutter camera	143-000 Additional cable 5m
142-005 Additional eyeball camera	143-003 Additional cable 10m
142-006 Additional minicam surface mount	143-002 Additional cable 15m
142-007 Additional minicam flush fit	143-004 Additional cable 20m
142-008 Additional mirror camera	143-005 Additional cable 30m
145-000 DVR unit single camera feed	143-006 Additional cable susie unit

* Note that shutter camera not available on controller 144-005.
Use Quad controller 144-006 and cable 143-010.

Quad system, featuring 4 way split screens

Kit No: 140-740



Monitor with external 4-way QUAD controller, 4 standard cameras, camera switch panel, 4 cables

Kit No: 140-741



Monitor with external 4-way QUAD controller, 2 mirror, 2 standard cameras, camera switch panel, 4 cables

Kit No: 140-742



Monitor with external 4-way QUAD controller, 1 standard, 2 mirror, 1 eyeball camera, camera switch panel, 4 cables

Kit No: 140-743



Monitor with external 4-way QUAD controller, camera switch panel, cable for single camera (camera not included)

Technical specifications:

Monitors

3.5" monitor with built-in controller

Model: 141-003

System is automatically activated when reverse gear is engaged.
Excellent high resolution picture quality even in low illuminated conditions.
Window suction mount.



Screen size	: 3.5" colour
Volts	: 11-30V DC
Power consumption	: 3W
Mechanical vibration	: 3G
Audio	: No
Mirror/normal image switch	: No
Weight including stand	: 330g
Dimensions (mm)	: 100(L) x 24(W) x 80(D)
Operating temp	: -5°C to 60°C (±3)
Day/night sensor	: Y

4.2" monitor with built-in controller

Model: 141-004

System is automatically activated when reverse gear is engaged.
Excellent high resolution picture quality even in low illuminated conditions.
Window suction mount.



Screen size	: 4.2" colour
Volts	: 11-30V DC
Power consumption	: 3W
Mechanical vibration	: 3G
Audio	: No
Mirror/normal image switch	: No
Weight including stand	: 340g
Dimensions (mm)	: 120(L) x 39(W) x 95(D)
Operating temp	: -5°C to 60°C (±3)
Day/night sensor	: Y

5" black and white CRT monitor

Model: 141-000

Auto activation on engaging reverse gear.



Screen size	: 5" CRT B/W
Volts	: 12/24V vis integral control box
Power consumption	: ≤ 14W
Mechanical vibration	: 5G
Audio	: No
Mirror/normal image switch	: Yes
Weight including stand	: 1.6Kg
Dimensions (mm)	: 177(W) x 122(H) x 191(D)
Operating temp	: -15°C to +50°C
Day/night sensor	: N

5" TFT LCD monitor

Model: 141-001

Auto activation on engaging reverse gear.



Screen size	: 5" TFT LCD colour/BW
Volts	: DC 12V (11-18V)
Power consumption	: 5W
Mechanical vibration	: 5G
Audio	: No
Mirror/normal image switch	: Yes
Weight including stand	: 350g
Dimensions (mm)	: 134(W) x 110(H) x 27(D)
Operating temp	: -10°C to +65°C
Day/night sensor	: N

5.6" TFT LCD monitor: 4:3

Model: 141-005

Maximum 4 cameras with controller.
Menu is workable even if under mirror image condition.
Built-in speaker.



Screen size	: 5.6" colour
Volts	: 12V DC, with control box (12-24V DC)
Power consumption	: 5W
Mechanical vibration	: 3G
Audio	: Yes
Mirror/normal image switch	: Yes
Weight including stand	: 490g
Dimensions (mm)	: 165(L) x 115(W) x 29(D)
Operating temp	: -15°C to +65°C
Day/night sensor	: Y

5.6" TFT LCD monitor with built-in controller: 4:3

Model: 141-006

Maximum 2 cameras.
Menu is workable even if under mirror image condition.
Built-in speaker.



Screen size	: 5.6" colour
Volts	: 12-24V DC
Power consumption	: 5W
Mechanical vibration	: 3G
Audio	: Yes
Mirror/normal image switch	: Yes
Weight including stand	: 490g
Dimensions (mm)	: 165(L) x 115(W) x 29(D)
Operating temp	: -15°C to +65°C
Day/night sensor	: Y

7" TFT LCD monitor: 16:9

Model: 141-007

Maximum 4 cameras with controller.
Menu is workable even if under mirror image condition.
Built-in speaker.



Screen size	: 7" colour
Volts	: 12V DC, with control box (12V-24V)
Power consumption	: 5W
Mechanical vibration	: 3G
Audio	: Yes
Mirror/normal image switch	: Yes
Weight including stand	: 560g
Dimensions (mm)	: 200(L) x 115(W) x 29(D)
Operating temp	: -15°C to +65°C
Day/night sensor	: Y

7" TFT LCD monitor with built-in controller: 16:9

Model: 141-008

Maximum 2 cameras.
Menu is workable even if under mirror image condition.
Built-in speaker.



Screen size	: 7" colour
Volts	: 12-24V DC
Power consumption	: 5W
Mechanical vibration	: 3G
Audio	: Yes
Mirror/normal image switch	: Yes
Weight including stand	: 585g
Dimensions (mm)	: 200(L) x 115(W) x 29(D)
Operating temp	: -15°C to +65°C
Day/night sensor	: Y

Note: All monitors using external controllers are supplied with a cable to the controller.

Technical specifications:

Cameras

Standard black & white camera

Model: 142-002

6 IR LEDs for low light use.
Aluminium alloy camera housing for exceptional corrosion resistance.
Microphone, external cable connection.



Resolution (pixels):	EIA:510(H) x 492(V) CCIR: 500(H) x 582(V)
Power consumption	: ≤3W
Mechanical vibration	: 10G
Image	: 1/3" B&W
Lens angle	: 110°
Weight	: 280g
Dimensions (mm)	: 110(L) x 75(W) x 78(D)
Operating temp	: -30°C to +65°C
Plug	: 4 pin
IP rating	: IP68

High specification black & white camera

Model: 142-009

18 IR LEDs for high definition night vision.
Aluminium alloy camera housing for exceptional corrosion resistance.
Microphone, external cable connection.



Resolution (pixels):	CCIR:500(H) x 582(V), EIA:510(H) x 492(V)
Power consumption	: ≤2W
Mechanical vibration	: 8G
Image	: 1/4" B&W
Lens angle	: 120°
Weight	: 380g
Dimensions (mm)	: 82(L) x 73(W) x 58(D)
Operating temp	: -30°C to +65°C
Plug	: 4 pin
IP rating	: IP68

Standard colour camera

Model: 142-003

18 IR LEDs for high definition night vision.
Aluminium alloy camera housing for exceptional corrosion resistance.
Light sensor: switches to high definition black and white image in low light.
Microphone, external cable connection.



Resolution (pixels):	500(H) x 582(V)
Power consumption	: ≤1.5W
Mechanical vibration	: 8G
Image	: 1/4" Sony CCD
Lens angle	: 110° (diagonal)
Weight	: 425g
Dimensions (mm)	: 82(L) x 73(W) x 58(D)
Operating temp	: -30° to +65° C
Plug	: 4 pin
IP rating	: IP68

Colour camera with shutter

Model: 142-004

18 IR LEDs for high definition night vision.
Aluminium alloy camera housing for exceptional corrosion resistance.
Light sensor: switches to high definition black and white image in low light.
Microphone, external cable connection.



Resolution (pixels):	500(H) x 582(V)
Power consumption	: ≤1.5W
Mechanical vibration	: 8G
Image	: 1/4" Sony CCD
Lens angle	: 110° (diagonal)
Weight	: 570g
Dimensions (mm)	: 105(L) x 65(W) x 93(D)
Operating temp	: -30°C to +65°C
Plug	: 6 pin
IP rating	: IP68
Use with in-line 6-pin controller, 2 camera controller or Quad controller	

Mirror camera

Model: 142-008

9 IR LEDs for high definition night vision.
Aluminium alloy camera housing for exceptional corrosion resistance.
Light sensor: switches to high definition black and white image in low light.
External cable connection.
Wide adjustment capability.



Resolution (pixels):	500(H) x 582(V)
Power consumption	: ≤1.5W
Mechanical vibration	: 8G
Image	: 1/4" Sony CCD
Lens angle	: 110° (diagonal)
Weight	: 215g
Dimensions (mm)	: 65(L) x 94(W) x 63(D)
Operating temp	: -30°C to +65°C
Plug	: 4 pin
IP rating	: IP68

Adjustable eyeball camera

Model: 142-005

9 IR LEDs for high definition night vision.
Aluminium alloy camera housing for exceptional corrosion resistance.
Light sensor: switches to high definition black and white image in low light.
Internal cable connection.
Wide adjustment capability.



Resolution (pixels):	500(H) x 582(V)
Power consumption	: ≤1.5W
Mechanical vibration	: 8G
Image	: 1/4" Sony CCD
Lens angle	: 110°
Weight	: 170g
Dimensions (mm)	: 68(L) x 50(W) x 64(D)
Operating temp	: -30°C to +65°C
Plug	: 4 pin
IP rating	: IP68

Minicam surface mount camera

Model: 142-006

Aluminium alloy camera housing for exceptional corrosion resistance.
Internal cable connection.
Low weight adjustment capability.



Resolution (pixels):	500(H) x 582(V)
Power consumption	: ≤1W
Mechanical vibration	: 8G
Image	: 1/4" Sony CCD
Lens angle	: 130°
Weight	: 95g
Dimensions (mm)	: Camera: 30(L) x 28(W) x 33(H) Bracket: 50(L) x 20(W)
Operating temp	: -30°C to +65°C
Plug	: 4 pin
IP rating	: IP67

Minicam flush mount camera

Model: 142-007

Aluminium alloy camera housing for exceptional corrosion resistance.
Mounts into bodywork/bumper.
27mm hole.
Internal cable connection.
Comes with 3 rim options: silver, black and chrome.



Resolution (pixels):	500(H) x 582(V)
Power consumption	: ≤1W
Mechanical vibration	: 8G
Image	: 1/4" Sony CCD
Lens angle	: 130°
Weight	: 90g
Dimensions (mm)	: 31(L) x 40(H)
Operating temp	: -30°C to +65°C
Plug	: 4 pin
IP rating	: IP67

Technical specifications:

Accessories

Control boxes

One camera input in-line control box

Model: 144-002

For use with Standard Camera.



Max cameras	: 1
Power supply	: 10-30V DC
Power consumption	: <12W
Dimensions (mm)	: 88(L) x 40(W) x 20(D)
Weight	: 295g
Plug	: 4 pin

One camera input in-line control box

Model: 144-003

For use with Shutter Camera.



Max cameras	: 1
Power supply	: 10-30V DC
Power consumption	: <12W
Dimensions (mm)	: 88(L) x 40(W) x 20(D)
Weight	: 295g
Plug	: 6 pin

Two camera input control box

Model: 144-004

Automatically switches to the rear view camera when the vehicle is placed in reverse. Video input and output function. Independent trigger for two cameras. Auto-time button can adjust scan time from two cameras from 2 - 20 seconds



Max cameras	: 2
Power supply	: 12-24V DC
Power consumption	: 9W-18W
Dimensions (mm)	: 157(L) x 76(W) x 34(D)
Weight	: 350g
Plug	: 6 pin (with 4 pin adapter)

Four camera input control box

Model: 144-005

Rear view camera or side view cameras can be added. Automatically switches to the rear view camera when the vehicle is placed in reverse.

Simultaneously connect monitor and VCR to select cameras. Extra audio/video out RCA terminals for DVR or VCR connection. Four camera switches for controlling each camera manually.



Max cameras	: 4
Power supply	: 12-24V DC
Power consumption	: 9W-18W
Dimensions (mm)	: 157(L) x 76(W) x 34(D)
Weight	: 355g
Plug	: 4 pin only, not for use with shutter camera

Quad view control box

Model: 144-006

Switch panel:

- 1) Show 1 image while 1 camera connected
- 2) Show 2 images while 2 cameras connected
- 3) Show 3 images while 3 cameras connected
- 4) Show 1, 2, 3 or 4 images while 4 cameras connected.

Priority to C1/C2/C3/C4 while triggered synchronously. Rear view camera or side view cameras can be added.

Automatically switches to the rear view camera when the vehicle is placed in reverse. Extra audio/video out RCA terminals for DVR or VCR connection.



Max cameras	: 4
Power supply	: 12-24V DC
Power consumption	: 9W-18W
Dimensions (mm)	: 155(L) x 90(W) x 33(D)
Weight	: 435g
Plug	: 6 pin (with 4 pin adapter)

Technical specifications:

Accessories

DVRs

DVR single channel unit

Model: 145-000

Option of 40, 80, 120 or 250 GB storage capacity.

Recording time limitation : 8 - 75 hours for 40GB (up to the image quality you select).

Video input : composite video : 1.0V p- p/75Ω DIN 4P linker *1

Video output composite video : 1.0V p- p/75Ω DIN 4P linker *1

Audio input : -8dB 22KΩΩ

Audio output : blended output ; 2 tracks output separately; RCA linker *2

Frequency features : 20HZ- 20KHZ (1Db) Resolution(pixels) : 704 x 576 (max)
352 x 288 (min) (PAL)



Power supply	: 12-24V DC
Power consumption	: <42W
*Storage capacity	: 40GB, 80GB, 120GB, 250GB
Compression format	: MPEG 2 DVD
Dimensions (mm)	: 285(L) x 200(W) x 100(D)
Weight	: 4.3kg (excluding HD)
Operating temp	: +5°C to +50°C Humidity: <90%
Storage temp range	: -20°C to +70°C Humidity: <95%
Mechanical vibration	: 5G

* requires Hard Disk (HD) sold separately

DVR 4 channel unit

Model: 145-001

Option of 40, 80, 120 or 250 GB storage capacity.

Wavelet compression technology.

Slow motion in playback mode and extreme fast re-wind speed.

Resolution (pixels): NTSC:720X480 (Max) PAL:720x576 (Max).

Adjustable frame rate with 8 levels.

Multiple recording rates from 0.5 up to 30fps

Recording modes : continuous recording overwrite mode or non overwrite.

Remote viewer software allows download of recorded video onto a PC.

On-screen display menu setup.

Remote controller button lock and password protection.

Built-in backup battery to protect data in HDD from power outages.

In the event of power loss the unit will automatically return to previous mode.

Uses remote control for OSD functions.

High Definition recording.



Power supply	: 12-30V DC
Power consumption	: <42W
*Storage capacity	: 40GB, 80GB, 120GB, 250GB
Compression format	: MPEG 2 DVD
Dimensions (mm)	: 430(L) x 320(W) x 70(D)
Weight	: 4.3kg (excluding HD)
Operating temp	: +5°C to +50°C Humidity: <90%
Storage temp range	: -20°C to +70°C Humidity: <95%
Mechanical vibration	: 5G

* requires Hard Disk (HD) sold separately

HD (Hard Disks) available

145-002

Hard disk, 40 GB

145-003

Hard disk, 80 GB

145-004

Hard disk, 120 GB

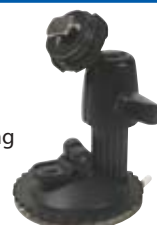
145-005

Hard disk, 250 GB

Mounting brackets

143-007

Monitor mounting bracket:
suction fixing



143-008

Monitor mounting bracket:
permanent fixing



Both brackets incorporate a unique mechanism, allowing maximum adjustment of the monitor angle.

Cable part number reference

143-001

Additional cable 2.8m

143-000

Additional cable 5m

143-003

Additional cable 10m

143-002

Additional cable 15m

143-004

Additional cable 20m

143-005

Additional cable 30m

143-009

4/6 pin adapter

143-010

6-pin shutter camera cable 20m

Susie cable unit

143-006

Additional cable susie unit



Vision Alert Automotive Limited
Victoria Industrial Park, Victoria Road
Seacroft, Leeds, LS14 2LA.

Tel: +44 (0)113 237 5340

Fax: +44 (0)113 237 5360

UK only local rate

Tel: 0845 1300 155

Fax: 0845 1300 255

Email: sales@visionalert.co.uk

www.visionalert.co.uk



Certificate number 3840/03